

Misawa City Information Guide





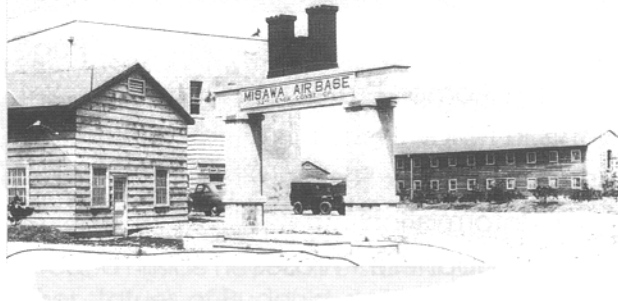
MISS VEEDOL

An airplane named "Miss Veedol" took off from the Sabishiro Coast in Misawa in 1931, transporting a human dream. A little over 41 hours later, it landed in Wenatchee, Washington, in the United States, thus achieving the brilliant feat of the first nonstop transpacific flight.

This was a difficult feat in those days since the airplane performance and piloting technology were far less advanced than they are today. There were many problems to be solved: enough fuel had to be stored in the plane to fly the great distance of 8000 kilometers and the pilots had to battle bad weather over the Pacific Ocean.

Many young fliers attempted this adventure and failed. It was Clyde Pangborn and Hugh Herndon piloting "Miss Veedol" who finally succeeded. "Miss Veedol" took off at 7:01 a.m. on October 4, 1931. During the flight, the pilots had endless troubles. They even had to cut off two wheels during the flight to decrease the weight and air resistance. The plane made a belly landing at Wenatchee at 7:14 a.m. on October 6. The total flight time was 41 hours, 13 minutes.

The pilots' adventure was supported by the wholehearted cooperation of the local people of Misawa. Presently, Misawa City has a sister-city relationship with Wenatchee. The two cities conduct cultural and personnel exchanges.



MISAWA CITY HISTORY

Misawa is a rectangular city with an area of 120.86 square kilometers. It is bordered by the Pacific Ocean to the east, Lake Ogawara to the west, Momoishi Town to the south and Rokkasho Village to the north. Misawa began as a branch village of Momoishi Village in 1881 and by 1958 it officially became Misawa City. Misawa's livelihood has always centered around farming and fishing, but it was once known as "Kizakino Pasture", after the many horse farms in the area. In fact, this region, formerly ruled by the Nambu Clan, was renowned throughout the country for the fine battle horses raised here. The Emperor himself rode horses from the Nambu Clan's stables.

Modern agriculture was brought to Japan in 1872 by Yasuto Hirosawa of Misawa's Tonami Clan. His farm, which is now the Tonami Clan Memorial Museum and Park, was the source of Western style stock breeding and farming for the rest of Japan.

After the Miss Veedol flight, the Imperial Navy recognized that Misawa was a suitable airstrip area and constructed a Naval Air Base here in 1939. After World War II the base was turned over to U.S. Forces who have continued to use it as an air base. Japanese nationals came to Misawa in droves to work for the base and the population of Misawa rose drastically.

Today, Misawa is known as a sky city, with one of Japan's largest airport facilities. There is an international feel to the city, promoted by the English signs everywhere and the people's willingness to reach out to foreigners.

TABLE OF CONTENTS

	Page
Sights in Aomori Prefecture	2-4
Sights in Misawa	5
Annual Events & Festivals	6-7
Travel Information	8
Helpful Japanese Phrases	9-10
Japanese Holidays	10
Local Advertisers	
Cars, Motorcycles, & Bicycles	11-16
Clothing Stores	17-18
Entertainment & Hobbies	19-22
Home & Leisure	23-26
Hotels & Travel	27-29
Restaurants	30-35
Services & Miscellaneous	36-39
Centerfold	
Aomori Travel Map	
Misawa City Map	
Tourist Help Guide	



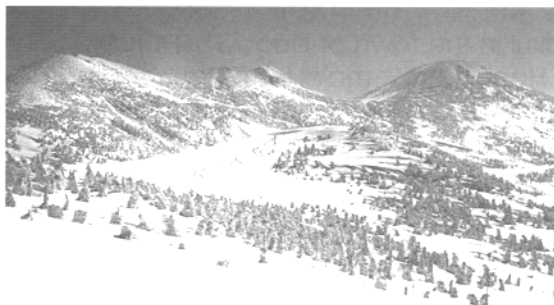
SIGHTS IN AOMORI PREFECTURE

ASAMUSHI AQUARIUM Over 400 species of marine life are displayed here. The dolphin and seal show is a perennial favorite with all ages.

Aomori City.

SHOWA DAIBUTSU One of the largest statues of Buddha in Japan, this statue sits serenely on a wooded hillside near a five-storied pagoda and other statues of Buddhist deities. **Aomori City.**

HAKKODA MOUNTAINS A natural wonderland lying south of Aomori, these peaks are dotted with lakes, hot-spring spas, and numerous hiking trails.



The Hakkoda Mountains

HIROSAKI CASTLE This three-story donjon located in the heart of Hirosaki Park is a must-see for visitors to the historic town of Hirosaki.

Hirosaki City.

OIRASE GORGE A 14 km stream that meanders through some of the most beautiful woodland in Japan, offering views of waterfalls and rich foliage. **Towada area.**

L A K E TOWADA

The third deepest lake in Japan (1,906 ft), Lake Towada lures tourists with its deep blue water and beautiful scenery.

HOKOJI TEMPLE

Located on Mt.

Nakui in the town of Nagawa, Hokoji was one of Hachinohe's main temples in feudal days. The lush grounds of cedar and pine groves also contain the tallest three-storied pagoda of its kind in Japan. **Near Mt. Nakui.**

CAPE SHIRIYA On the tip of the Shimokita Peninsula, this cape is noted for its wild, romantic beaches. Visitors can also see the famous *kandachima*, which means 'horses standing in the cold' that are often grazing near the lighthouse. **Shimokita Peninsula.**

HOTOKE-GA-URA This three kilometer stretch of coastline is filled with limestone cliffs over 100 meters high which have been carved over time into fantastic formations. **Shimokita Peninsula.**

OSOREZAN This is a dormant volcano housing one of the most sacred sites in all of Japan. The Buddhist temple in this almost lunar landscape was founded in 862 and is a mecca



Three-storied pagoda at Hokoji Temple



Osore-zan

for those seeking contact with the spirit world. **Near Mutsu. SANNAI MARUYAMA**

An active archeological

site offering a glimpse into Japan's distant past. Walk among reconstructed Jomon era (c. 8000-300BC) huts and excavated shell mounds.

Aomori City.

HACHIMANGU SHRINE Constructed in 1648, this important shrine offers visitors a display of nationally treasured armor, some gifts from Emperor Choikei to the Nambu clan.

Hachinohe City.

ONSENS A great way to have clean family fun or relax after a long day, hot baths can be found in every town and nestled away in the mountains at natural hot springs. Look for this symbol: ☩

SKIING There is no better way to take advantage of one of Aomori's most abundant resources (snow!) than to hit the slopes at the many ski areas and resorts.



Jomon era figurine

SIGHTS IN MISAWA

TONAMI CLAN MEMORIAL SITE This site honors Yasuto Hirosawa who brought Western farming methods to Japan. There is a museum, petting zoo, plum orchards, and more.

MISAWA CITY FOLKLORE MUSEUM This museum has displays of artifacts such as early farming, fishing & hunting tools historically used in Misawa. It is a good source of information about the old cultures of Japan.



Yasuto Hirosawa



Misawa City Folklore Museum



Shuji Terayama Memorial



Windsurfer at Lake Ogawara

SHUJI TERAYAMA MUSEUM A noted dramatist and author, Shuji Terayama received many awards for his movies and radio dramas. This museum introduces visitors to his broad range of works.

LAKE OGAWARA The center of outdoor activity in Misawa. Summer brings many visitors to the campgrounds and bungalows and winter brings ice fishermen looking for pond smelt.

5

ANNUAL EVENTS AND FESTIVALS

ENBURI Colorful harvest festival featuring groups of dancers and parades. **17-20 February.**

SHIMODA SWAN FESTIVAL A celebration of the Russian Trumpeter swans that migrate to Shimoda every year. **Early March.**

JAPAN DAY Held annually on Misawa Air Base, this festival exhibits all aspects of Japanese arts and culture. **Early April.**

SPRING FESTIVAL ROAD Look for great sales on Misawa's Arcade Street. **Late April-Early May.**

CHERRY BLOSSOM FESTIVALS A nationwide time for celebrations. Have a picnic under the trees and enjoy the blossoms. Misawa's is held at the City Park near the Library. **Late April-Early May.**

AMERICAN DAY An event showcasing the American community in Misawa with booths and games lining the streets. **Early June.**

KEHI SHRINE FESTIVAL Visitors can take home drawings of farm animals which were historically used to bless farmers' animals. **July.**

LAKE OGAWARA FESTIVAL The official opening of Ogawara's beaches. Don't miss the beauty pageant and sumo for kids. **Late July.**

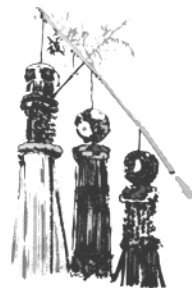
OSOREZAN GRAND FESTIVAL

Mediums assist families in contacting their departed relatives. **July 20-24.**

TANABATA Colorful paper lanterns and streamers deck the streets during this festival for star-crossed lovers. **Late July.**

KAPPA FESTIVAL Held at the Komaki Grand Hotel, this festival features dragon boat races, traditional dances and fireworks. **Late July.**

LAKE TOWADA FIREWORKS Three days of music, food and fireworks on the shores of Lake Towada. **Mid July.**



6

NEBUTA One of the largest festivals in Japan. Millions of people come to Aomori yearly to see the huge floats and dancers in the streets.



August 2-7.

NEPUTA Large paper floats and dancers parade the streets of Hirosaki. **August 1-7.**

HACHINOHE SANSHA TANSAI The "Three Shrine" Festival, with ornate floats on parade. **August 1-3.**

MISAWA SUMMER FESTIVAL Parades of dancers and portable shrines fill Misawa's streets. **Late August.**

MISAWA PORT FESTIVAL Fireworks and games. **Early September.**

MISAWA AIR SHOW Held on Misawa Air Base, Japanese and American pilot demonstrations as well as static aircraft displays. **Early September.**

TRAIN STATION SQUARE FESTIVAL Various performances throughout the day. **Mid September.**

MISAWA WORLD MARKET A flea market and local performers to entertain the shoppers. **Mid October.**

CHRYSANTHEMUM FESTIVAL Held in Hirosaki park, this festival features displays of the imperial flower as well as games and food booths. **October-November.**

HALLOWEEN SALES EVENT Sales on Arcade Street.

Late October.

CULTURE & INDUSTRY FESTIVAL Local artisans display their work as well as some hands on exhibits. **Early November.**

SHIMODA SALMON FESTIVAL Fishing without the pole! Contestants scramble after salmon to capture them barehanded.

Late November.

CHRISTMAS SALES EVENT Sales on Arcade Street. **December.**



TRAVEL INFORMATION

AIR

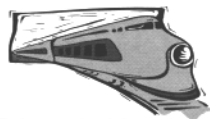
Misawa to



Tokyo (Haneda Airport), 1 hr 20 min, 4 flights daily ¥21700
 Fukuoka (via Haneda), 1 hr 40 min, 4 flights daily ¥48,750
 Osaka, 1 hr 30 min, 1 flight daily¥27,650
 Hakodate (via Chitose), 1 hr 30 min, 1 flight daily ¥26,400
 Sapporo (Chitose Airport), 50 min, 1 flight daily ¥15,500

RAIL

Misawa to



Tokyo via Morioka, 3-6 hrs, 15 trains daily.....¥15,380
 Hakodate via Aomori, 2 hrs 46 min, 7 trains daily...¥6,410
 Sapporo via Aomori, 4 hrs 50 min, 7 trains daily...¥12,180

HIGHWAY BUS



JR Bus Hachinohe to Tokyo, 9 hrs, 1 bus daily.....¥9,680
JR Bus Aomori to Tokyo, 9 hrs 30 min, 1 bus daily...¥10,190
Towada Dentetsu Co.
 Hachinohe to Tokyo, 9 hrs, 1 bus daily ¥9,680

FERRY

Hachinohe to



Muroran, 8 hrs, 2 ferries daily ¥3,970 - ¥9,970
 Tomakomai, 9 hrs, 2 ferries daily ¥3,970 - ¥9,990
Aomori to
 Muroran, 7 hrs, 1 ferry daily ¥3,460 - ¥8,670
 Hakodate, 3 hrs 40 min, 9 ferries daily ¥1,420 - ¥3,560
 Hakodate Express, 2 hrs, 2 ferries daily¥2,130

Prices are current as of May 1999

HELPFUL JAPANESE PHRASES

Good morning. Ohayo Gozaimasu
Good afternoon. Konnichiwa
Good evening. Konbanwa
Good-bye. Sayonara
Excuse me. (to get someone's attention) Sumimasen
I'm sorry. Gomen nasai
Thank you. Domo Arigato Gozaimasu
You're welcome. Do itashimashite.
Do you speak English? Eigo o hanashimasu ka?
Please speak more slowly. Yukkuri hanashite kudasai.
Please repeat that. Mo ichi do hanashite kudasai.
I understand / I don't understand
Wakarimasu / wakarimasen
one / two / three / four / five
ichi / ni / san / shi (yon) / go
six / seven / eight / nine / ten
roku / shichi (nana)/hachi / kuu / juu
fifty / one hundred / one thousand / ten thousand
go juu / hyaku / sen / ichiman
Where is the subway? Chikatetsu wa doko desu ka?
Airport / Train station / Bus Station / Ferry
Kuukoo / Eki / Basu teiryuujo / Ferii
Airplane / Train / Bus / Boat / Taxi
Hikooki / Ressha / Fune / Takushi
Telephone / Bathroom / Entrance / Exit
Denwa / Toire / Iriguchi / Deguchi
Hospital / Post Office / Police Station
Byooin / Yubinkyoku / Keisatsu
Please call a taxi for me. Takushi o yonde kudasai.
How much is this? Kore wa ikura desu ka?
Do you have (maps)? (Chizu) wa arimasu ka?
What is this? Kore wa nan desu ka?
Please give me (a fork). (Foku) o kudasai.
Red / Blue / Green / Yellow / White / Black
Aka / Ao / Midori / Kiiri / Shiro / Kuro
Please show me o oshiete kudasai.
Please write the address. Jusho kaite kudasai.
Do you accept credit cards?
Kuredito kado tsukaemasu ka?
May I take pictures? Shashin o totte mo ii desu ka?
What is your name? Onamae wa nan to iimasu ka?

My name is desu.
How old are you? Ikutsu desu ka?
What is your telephone number?
Denwa bango wa nan ban desu ka?
What time is it? Nanji desu ka?
When do you open / close? Nanji kara / made desu ka?
I (me) / You / He / She / We
Watashi / Anata / Kare / Kanojo / Watashitachi

VOWEL PRONUNCIATION GUIDE:

a as in **father**; **e** as in **press**; **i** as in **Bali**;
o as in **colt**; **u** as in **true**

JAPANESE HOLIDAYS

January 1 New Year's Day
January 15 Adult's Day
February 2 Setsubun
February 11 National Foundation Day
March 21 Vernal Equinox Day
April 29 Green Day
May 3 Constitution Day
May 4 People's Day
May 5 Children's Day
Green Day, Constitution Day & Children's Day constitute the "Golden Week" holidays in Japan. Most business close up and families travel during this time.
July 20 Ocean Day
September 15 Respect for the Aged Day
September 23 Autumnal Equinox Day
October 10 Health and Sports Day
November 3 Culture Day
November 15 Shichi-go-san (7-5-3) Day
November 23 Labor Thanksgiving Day
December 23 Emperor Akihito's Birthday



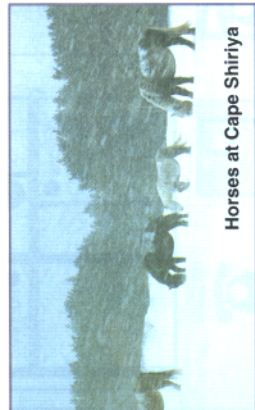
Hirotsuki Castle



Oirase Gorge



Mogami Coastline



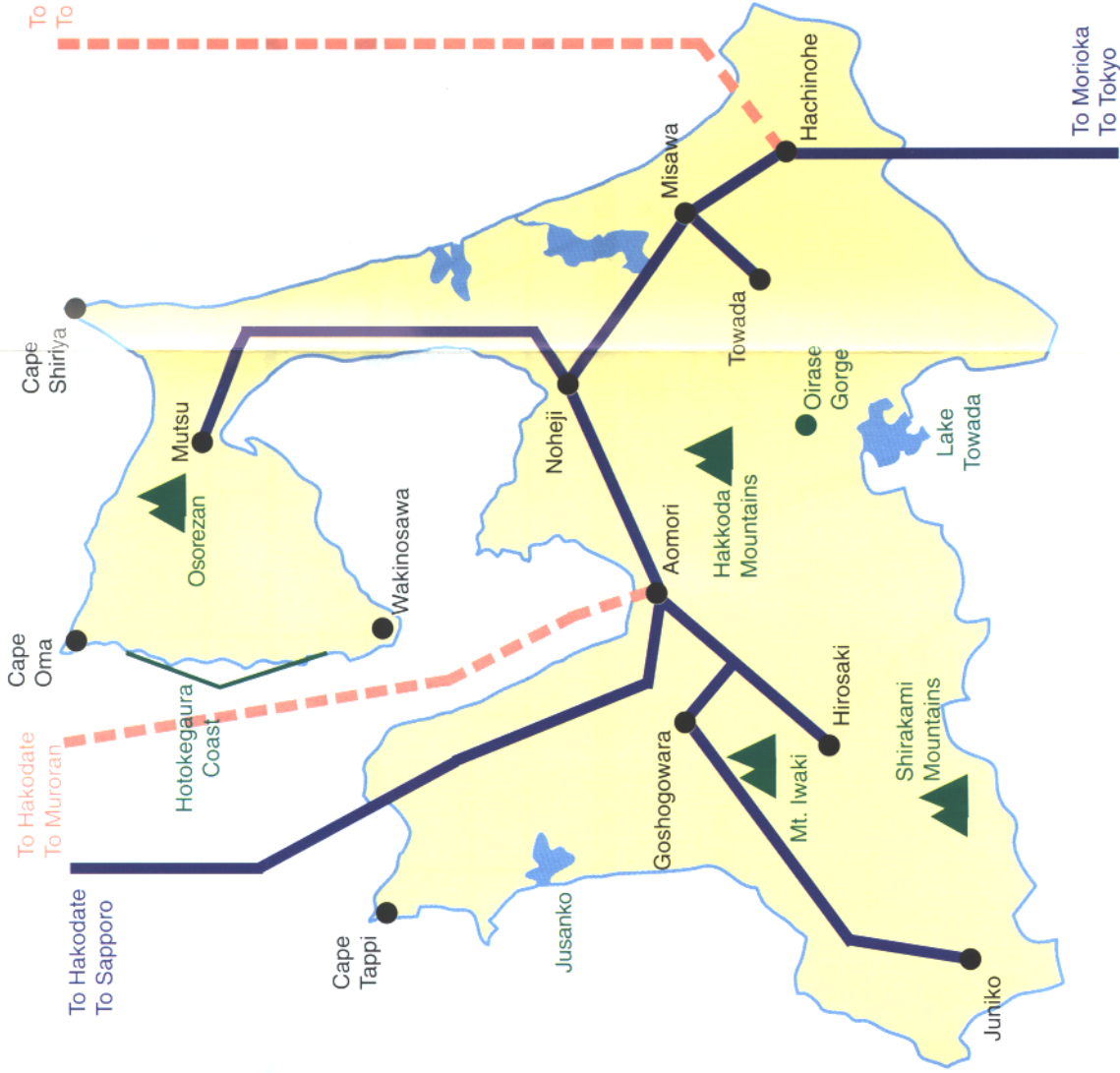
Horses at Cape Shiriya



Showa Daibutsu



Red-Threaded Armor at Hachimanshine



Airplane

Ferry

Train

To Murooran
To Tomakomai

To Hakodate
To Murooran

To Hakodate
To Sapporo

To Morioka
To Tokyo